

A top-down view of medical supplies on a light blue surface. A clipboard with a black cover and white paper is in the upper left. A silver stethoscope with white earbuds is draped across the center. A pair of round, clear glasses is in the upper right. A blister pack with four blue and white capsules is in the center. The background is a solid light blue color.

MDMEDICINE LOYALTY PROGRAM



<https://mdmedicine.com>



<https://uniteddrs.com>

MDMEDICINE Loyalty Program is a comprehensive solution to provide quality healthcare services at affordable costs in an internationally expanding network of healthcare providers.

The MDMEDICINE Loyalty Program offers a one-card solution that includes discounted rates on healthcare services by an internationally expanding network of healthcare providers and a comprehensive, patient-owned, globally accessed electronic health record (EHR).

Discounts include:



Outpatient
(Clinic)
consultations



Outpatient
Laboratory
Procedures.



Outpatient
Imaging
Procedures.



Outpatient
noninvasive
procedures.



Operating
and recovery
room charges



Inpatient
hospital
daily room
rate



Inpatient
laboratory
procedures



Inpatient
imaging
procedures.



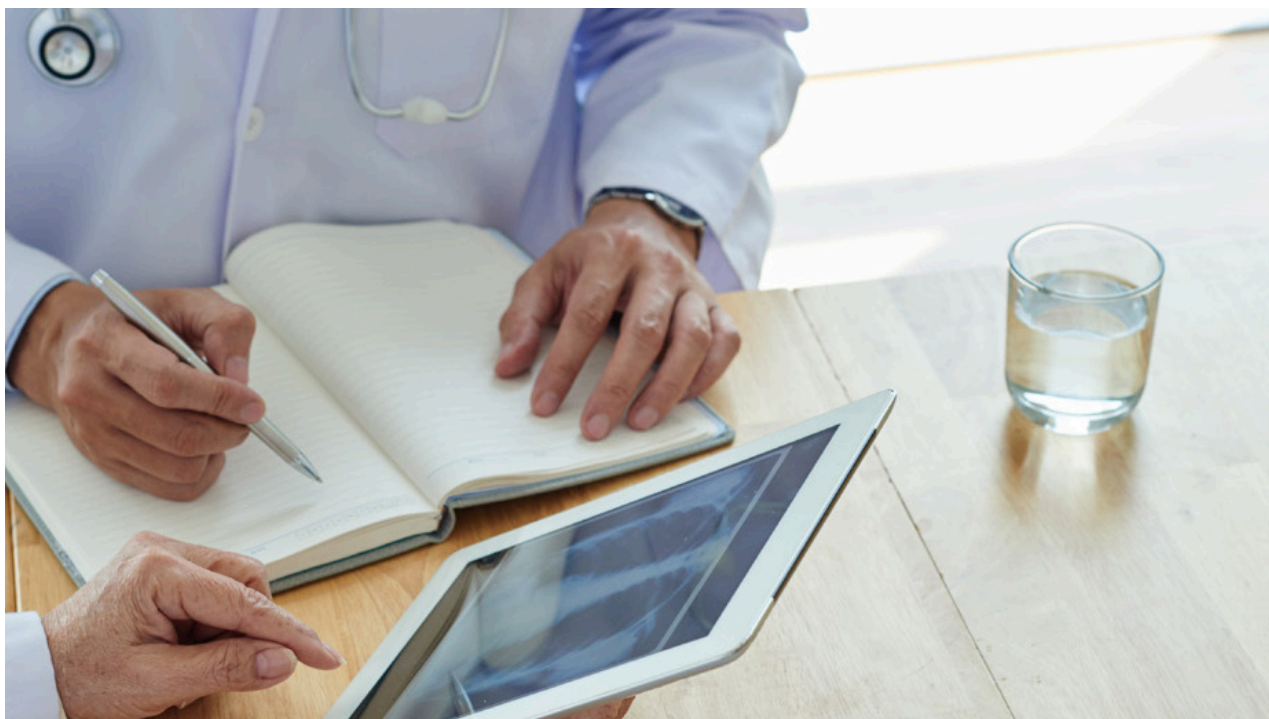
Inpatient
surgical
professional
fees



Other
Services

Using the MDMEDICINE Loyalty Program Card is simple. Present the MDMEDICINE Loyalty card to any participating healthcare provider or facility, and instantly, discounted rates on a wide range of medical services will apply.

The provider's access to the EHR is easy. After logging into the MDMEDICINE site and entering the MDMEDICINE health card number, an OTP (One-Time Password) will be sent to the patient's mobile phone number. The patient will share the OTP number with the healthcare provider to check the patient's EHR, provide the necessary medical care, enter the information into the EHR, and close the file. The file closes automatically after 15 minutes of logging in.



Take control of your healthcare and your healthcare expenses. With comprehensive coverage, easy access to discounted services, and a patient-owned, globally accessed Electronic Health Record (EHR), the MDMEDICINE Loyalty Program is the ultimate solution for affordable, quality healthcare.

MDMEDICINE LOYALTY PROGRAM

| | | Visit 1 | Visit 2 |
|----------------------|--------------------------|---------|---------|
| CONSULTATIONS | | | |
| FAMILY MEDICINE | | X | X |
| LABORATORY | | | |
| BLOOD SUGAR | FBS | X | |
| BLOOD PROFILE | CBC, Platelets | X | |
| RENAL PROFILE | BUN,Cr, UA, U/A | X | |
| CARDIAC PROFILE | CPK, LDH | X | |
| LIPID PROFILE | Cholesterol, TGs,LDL,HDL | X | |
| LIVER PROFILE | SGOT,SGPT,GGT | X | |
| PROCEDURES | | | |
| EKG | | X | |


Program
developed by



Program delivered in
Lebanon by




Contact Us

 +973 1778 3858


 info@mdmedicine.com

 Office 203, HMG Tower
Al Seef 428, Building 2358 Road
2830, Manama, Kingdom of Bahrain

 mdmedicine.com

 +961 (01) 752 111

 info@uniteddrs.com

 Abdelaziz Street Al Hamra, Al Mabani
Building, Beirut. Lebanon

 uniteddrs.com

